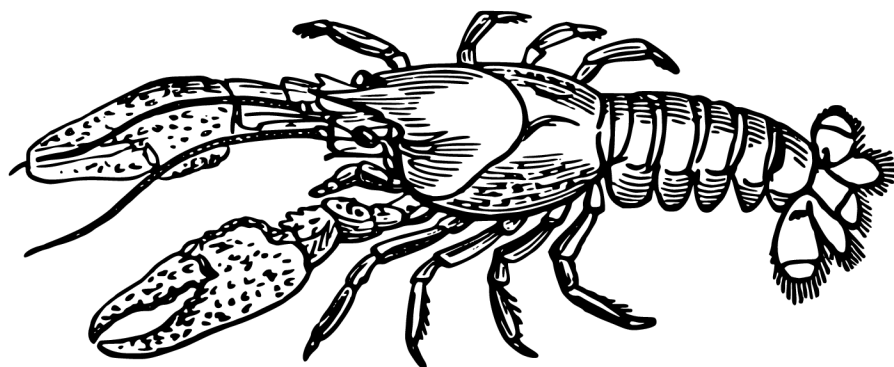


Grab your favorite pen and a cozy cup of coffee—you're about to journey through the sights, sounds, and stories of Maine without ever leaving your chair. This collection of handcrafted word searches and crosswords is a tribute to the Pine Tree State: its rugged coastlines, charming towns, iconic foods, quirky sayings, and hidden lore.

Whether you're a native Mainer, a seasonal visitor, or simply someone who dreams of lighthouses and lobster rolls, these puzzles offer a relaxing and thoughtful way to connect with all that makes Maine special.

So settle in, sharpen your mind, and let The Heart of Maine lead you puzzle by puzzle through the soul of the state we love.



PINE TREE

P	S	F	M	Z	B	M	G	M	F	E	V	X	W	V	K	E	A	L	E	R	E	L	O	V
V	C	Z	T	R	U	N	K	P	E	V	E	R	G	R	E	E	N	I	W	X	N	R	H	E
U	H	R	D	D	Y	K	D	H	L	Q	I	E	N	X	T	V	Z	U	V	G	T	B	T	I
U	I	X	O	L	P	B	D	W	N	N	R	C	H	U	E	S	Z	S	A	S	Y	S	F	A
V	Y	H	Y	D	E	Q	I	E	V	B	V	H	D	D	C	L	G	E	D	N	N	L	S	H
D	J	B	M	O	Q	Z	T	S	Z	U	Y	D	H	O	T	B	N	C	V	S	H	A	D	E
N	Q	H	D	P	G	A	T	O	Y	K	P	U	S	R	H	X	H	Q	A	B	E	N	O	C
X	D	O	C	R	S	U	Y	K	F	D	J	J	E	Y	H	C	H	V	Y	O	O	V	W	R
U	X	U	E	N	J	D	U	M	G	U	H	E	L	T	U	F	V	F	Z	Z	F	L	C	Z
U	F	Y	B	A	A	W	S	F	Z	Q	L	G	P	I	M	K	C	V	B	Z	O	H	F	C
Z	X	H	S	J	D	R	R	T	N	I	E	E	U	B	X	X	L	V	N	V	R	W	T	E
M	Y	J	P	U	Z	C	B	S	N	N	H	M	Q	O	G	R	N	G	E	U	E	S	Z	Z
V	K	D	Q	B	M	M	I	E	O	S	P	S	K	T	B	S	A	I	E	A	S	A	I	E
E	B	G	F	J	R	V	B	C	A	H	V	J	C	S	E	I	W	A	R	A	T	P	D	V
P	A	E	L	D	L	D	E	N	M	F	H	W	C	S	R	S	C	M	G	W	Y	K	A	B
A	R	M	M	J	Y	N	E	E	Z	V	F	R	I	I	H	I	E	G	L	M	R	I	J	R
C	O	H	T	M	I	X	E	I	G	A	Z	V	O	J	J	I	S	G	W	A	N	S	I	F
T	V	D	D	P	Y	R	W	G	O	G	S	A	J	O	G	H	K	S	B	Y	S	O	D	X
C	P	V	P	S	T	O	U	O	X	X	R	Q	J	P	T	N	C	E	L	A	T	H	E	I
Y	R	U	C	E	O	E	T	M	W	K	V	O	L	P	W	S	B	L	Y	Y	O	E	X	K
U	T	K	N	D	A	I	E	O	B	X	Q	R	V	A	Q	N	Q	D	B	M	H	F	T	V
O	E	I	S	R	M	H	B	B	T	Y	M	K	T	E	S	E	C	E	Q	H	M	J	K	W
C	P	F	Y	B	G	N	N	M	S	V	W	O	M	C	H	T	I	E	S	E	P	Q	N	S
W	R	S	E	I	P	O	F	Q	L	V	Q	X	T	L	M	T	T	N	E	C	S	K	N	B
B	L	R	S	O	G	E	O	H	S	L	S	J	V	D	O	O	W	T	F	O	S	V	M	D

BOUGH
WOODS
SCENT
SHADE
TRUNK

PINECONE
EVERGREEN
PINE TREE
TREE LINE
SAP

ROOTS
GROVE
GREEN
CONE
BARK

SOFT WOOD
NEEDLES
TIMBER
FOREST
BRANCH

PORTLAND

Q	U	A	L	M	S	X	I	N	M	P	V	A	S	P	C	R	N	C	Q	P	D	Y	R	F
X	Q	J	T	R	H	O	C	Q	V	H	M	E	T	F	O	T	R	S	Q	A	D	U	V	V
H	J	J	H	U	Y	I	U	I	A	N	K	E	A	K	B	R	Z	P	M	G	N	K	J	A
C	J	A	U	P	O	K	C	R	U	X	S	A	O	U	B	A	D	U	R	H	A	X	A	K
P	Z	T	S	W	G	T	C	P	K	U	O	I	B	H	I	K	C	Y	E	Q	L	A	K	Q
E	A	L	S	Y	O	A	O	I	O	H	E	F	G	I	T	F	A	R	S	P	S	D	V	I
X	I	F	M	R	I	R	X	H	R	U	B	H	N	I	R	B	Q	S	T	R	I	T	N	I
I	L	B	I	U	T	R	T	Q	F	B	F	Q	I	A	O	A	B	U	A	V	S	I	P	Z
W	C	A	O	L	E	H	U	R	S	V	L	C	H	C	P	P	Z	T	U	Y	K	H	G	Y
Q	N	U	A	A	G	S	E	L	X	P	C	D	S	C	D	L	K	H	R	N	A	G	M	B
I	I	N	E	I	Y	V	U	G	Q	Z	I	A	I	Z	L	Z	Y	F	A	Y	E	A	Z	W
A	D	B	L	A	N	K	B	M	Z	S	C	H	F	K	O	O	C	Q	N	X	P	U	O	K
T	R	J	S	J	P	J	A	B	W	M	T	P	S	J	T	O	J	Y	T	X	U	R	F	V
V	B	T	W	A	G	S	A	O	T	W	F	O	J	E	D	D	Z	E	S	F	K	T	Y	C
N	K	Q	S	Z	G	Q	R	F	R	R	H	O	U	T	S	M	B	X	M	I	E	D	T	C
E	K	U	G	D	E	F	A	Y	O	B	H	V	J	R	Y	I	M	R	N	E	R	R	B	N
D	E	J	S	A	I	P	Z	R	L	Y	K	K	T	Z	I	C	U	G	I	D	G	D	R	L
A	M	U	O	Y	F	S	S	W	L	C	M	F	V	D	L	S	H	R	R	O	H	H	K	Y
S	N	V	R	N	T	Y	T	S	E	V	B	R	L	Y	R	A	T	D	C	A	H	L	G	H
S	B	Y	K	X	K	I	T	R	Y	D	Y	F	Z	W	R	N	Z	S	U	U	M	J	U	T
N	B	E	B	I	N	B	B	O	I	N	H	Y	T	B	N	B	O	F	E	Z	R	Y	J	F
F	Y	W	V	B	Q	A	N	Q	I	C	E	F	O	F	N	W	H	H	U	T	U	Z	E	Q
V	E	Z	E	E	R	B	A	E	S	J	T	R	T	M	W	A	T	E	R	F	R	O	N	T
K	B	T	X	F	U	R	D	K	R	Y	R	S	T	U	A	C	A	A	U	C	M	R	E	S
Q	S	E	L	I	C	O	F	F	E	E	S	H	O	P	S	Q	S	H	O	P	S	B	N	A

VICTORIAN
SEA BREEZE
PORTLAND
CASCO BAY
TOURISTS

CRUISE SHIPS
RESTAURANTS
PEAKS ISLAND
LIGHTHOUSE
WATER FRONT

COFFEE SHOPS
WORKING HARBOR
ART SDISTRICT
FISHING BOATS
BRICK

OLD PORT
TROLLEY
MUSEUM
SHOPS
FERRY

CLAMS

D	O	T	U	H	G	Y	G	E	R	E	Q	W	U	G	C	C	J	S	D	B	H	P	M	A
W	V	A	O	I	C	E	S	A	J	S	I	F	A	B	K	N	O	S	E	M	W	U	L	Q
Y	N	S	P	S	R	B	K	E	C	Q	R	D	W	F	K	U	F	R	E	S	H	V	M	P
J	Q	R	T	S	Z	E	X	F	D	J	Y	X	T	E	A	C	C	A	V	J	A	G	E	H
N	S	J	T	E	W	N	H	H	C	I	I	R	F	Z	O	O	B	D	B	C	V	T	Y	Z
E	E	C	Y	J	A	P	I	N	A	F	T	P	E	T	B	Y	M	L	W	J	V	X	R	C
N	J	Y	H	R	T	M	Y	O	X	J	H	D	G	G	P	S	B	W	E	B	R	V	U	R
E	I	R	N	U	L	Y	E	O	R	A	Y	M	W	F	E	V	L	A	V	I	B	Z	Z	E
N	V	M	U	J	T	D	N	R	W	K	W	R	E	T	A	W	T	L	A	S	W	S	P	D
Q	B	H	I	G	I	L	R	I	S	W	B	F	V	B	N	C	Y	T	X	J	Y	R	V	W
U	X	B	U	N	E	N	A	D	R	B	A	U	O	Y	A	H	E	N	P	F	C	D	S	O
J	N	Y	N	T	W	H	L	U	F	B	T	G	C	W	E	T	S	A	N	D	L	F	Y	H
N	Z	E	F	R	F	G	R	X	C	U	H	B	Z	K	X	A	O	M	E	Y	X	Q	R	C
U	R	K	T	L	C	V	M	W	Z	S	Y	N	F	Q	E	O	G	O	A	E	D	V	K	B
Z	D	C	U	L	N	R	U	J	K	C	K	F	V	S	F	T	E	C	N	D	R	W	Q	Q
M	T	N	E	A	V	J	D	R	T	L	I	O	O	X	J	K	U	O	N	L	N	P	R	Z
P	W	W	L	T	H	Y	F	B	S	U	F	F	V	P	Z	P	S	M	U	Y	Z	W	J	Z
Y	I	J	R	S	N	O	L	A	Z	B	T	M	G	Y	C	K	C	R	D	N	M	W	Q	R
Y	V	H	B	A	I	D	A	Q	Q	S	A	F	U	H	T	B	N	M	E	S	P	C	D	P
U	L	S	S	O	P	G	T	H	H	L	D	H	M	C	E	K	M	D	L	G	N	I	V	Z
V	J	D	H	C	X	N	B	E	C	K	I	S	Y	E	T	D	D	E	O	Y	G	Z	W	X
R	B	A	E	H	I	P	L	D	W	T	G	U	I	Y	N	R	V	L	C	V	R	I	J	E
C	D	D	L	V	D	L	R	P	N	W	Y	R	Y	K	U	O	Z	E	N	D	Y	C	D	B
K	P	I	L	I	Y	A	D	L	X	N	T	M	A	V	H	E	M	A	L	C	C	R	V	E
I	R	T	V	K	H	X	Q	Y	L	F	U	G	D	S	J	C	E	S	V	F	D	T	A	P

MUDFLAT
CHOWDER
WETSAND
BIVALVE
COASTAL

DIGGERS
SALTWATER
SOFT SHELL
HARD CLAM
STEAMERS

BUCKET
TIDES
FRESH
SHELL
BRINY

SHOVEL
DINNER
CLAM
RAKE
DIG

BLUEBERRIES

X	N	O	K	C	J	I	D	P	H	Z	A	O	N	H	L	D	O	P	L	O	Z	M	Y	R
K	E	V	C	E	G	T	P	U	O	B	N	L	J	M	R	N	T	E	J	W	P	Q	Y	L
H	Y	H	E	F	H	B	B	O	G	R	H	E	L	I	N	K	W	W	E	J	Y	W	V	P
O	I	C	C	Y	B	F	K	N	X	T	S	N	G	V	N	A	N	J	N	P	I	J	F	D
Y	W	C	A	D	U	T	A	R	T	I	X	T	E	E	W	S	G	C	Z	L	F	B	C	P
O	X	W	K	S	A	O	T	R	N	U	G	N	P	W	D	Z	U	J	D	K	V	V	O	M
H	Y	D	X	N	Z	E	M	T	L	R	K	C	T	H	M	A	F	E	C	P	V	S	A	R
Z	I	B	O	Y	N	K	T	S	M	F	H	S	E	X	B	M	A	Z	L	P	T	J	Z	J
J	Y	A	D	E	J	A	G	E	I	J	L	S	K	P	V	M	N	V	P	A	Q	V	N	N
W	I	M	U	E	S	N	Q	V	J	L	P	A	P	A	N	C	A	K	E	I	C	J	T	K
N	H	Z	L	L	I	K	X	R	C	Z	U	Q	J	U	R	G	W	K	X	Q	L	E	V	J
U	Z	L	B	K	G	U	X	A	N	Y	B	T	I	E	J	K	N	E	K	Y	K	K	I	B
Y	Y	P	C	O	D	I	L	H	N	I	L	Y	R	Q	I	D	Z	I	F	S	B	X	K	M
R	T	I	S	N	S	H	P	E	V	O	F	V	J	F	A	G	S	J	A	I	R	T	D	R
B	P	Q	E	S	P	D	B	N	M	F	P	F	G	C	K	W	C	B	B	J	E	S	R	B
G	J	L	O	K	I	Y	L	R	X	N	K	M	U	J	Q	D	E	T	X	B	K	L	P	U
U	H	E	K	O	E	A	U	M	W	Y	H	C	E	M	G	B	V	I	W	L	O	D	D	F
O	K	A	V	H	D	S	E	G	A	Y	V	N	U	L	D	S	C	K	Q	O	B	F	D	S
D	S	M	Z	N	T	T	B	G	Z	I	N	Y	X	G	V	N	I	N	V	O	J	S	U	B
D	V	K	D	H	H	R	E	O	I	B	N	Z	M	I	F	G	R	G	R	M	A	O	M	C
D	U	C	U	U	D	A	R	O	V	U	V	E	P	V	K	L	G	B	L	U	Q	Z	Z	G
D	M	Y	I	G	B	T	R	X	N	S	S	F	C	J	I	K	E	G	B	Q	U	Y	M	G
X	W	N	G	I	F	U	I	Q	V	H	A	J	V	R	B	L	M	K	L	B	T	S	E	M
G	W	T	U	B	K	D	E	X	O	R	V	I	M	T	O	G	V	A	A	Y	R	Q	T	D
T	L	Q	B	P	F	X	S	S	H	S	E	R	F	Y	C	P	D	L	M	R	B	I	L	H

FIELDS
MUFFIN
TARTS
JELLY
SWEET

BASKET
BLUEBERRIES
MAINE CROP
HARVEST
PICKING

BLOOM
FRESH
FRUIT
TART
BUSH

PANCAKE
RAKE
WILD
JAM
PIE

PINE TREE

P	S	F	M	Z	B	M	G	M	F	E	V	X	W	V	K	E	A	L	E	R	E	L	O	V		
V	C	Z	T	R	U	N	K	P	E	V	E	R	G	R	E	E	N	I	W	X	N	R	H	E		
U	H	R	D	D	Y	K	D	H	L	Q	I	E	N	X	T	V	Z	U	V	G	T	B	T	I		
U	I	X	O	L	P	B	D	W	N	N	R	C	H	U	E	S	Z	S	A	S	Y	S	F	A		
V	Y	H	Y	D	E	Q	I	E	V	B	V	H	D	D	C	L	G	E	D	N	N	L	S	H		
D	J	B	M	O	Q	Z	T	S	Z	U	Y	D	H	O	T	B	N	C	V	S	H	A	D	E		
N	Q	H	D	P	G	A	T	O	Y	K	P	U	S	R	H	X	H	Q	A	B	E	N	O	C		
X	D	O	C	R	S	U	Y	K	F	D	J	J	E	Y	H	C	H	V	Y	O	O	V	W	R		
U	X	U	E	N	J	D	U	M	G	U	H	E	L	T	U	F	V	F	Z	Z	F	L	C	Z		
U	F	Y	B	A	A	W	S	F	Z	Q	L	G	P	I	M	K	C	V	B	Z	O	H	F	C		
Z	X	H	S	J	D	R	R	T	N	I	E	E	U	B	X	X	L	V	N	V	R	W	T	E		
M	Y	J	P	U	Z	C	B	S	N	N	H	M	Q	O	G	R	N	G	E	U	E	S	Z	Z		
V	K	D	Q	B	M	M	I	E	O	S	P	S	K	T	B	S	A	I	E	A	S	A	I	E		
E	B	G	F	J	R	V	B	C	A	H	V	J	C	S	E	I	W	A	R	A	T	P	D	V		
P	A	E	L	D	L	D	E	N	M	F	H	W	C	S	R	S	C	M	G	W	Y	K	A	B		
A	R	M	M	J	Y	N	E	E	Z	V	F	R	I	I	H	I	E	G	L	M	R	I	J	R		
C	O	H	T	M	I	X	E	I	G	A	Z	V	O	J	J	I	S	J	E	G	W	A	N	S	I	F
T	V	D	D	P	Y	R	W	G	O	G	S	A	J	O	G	H	K	S	B	Y	S	O	D	X		
C	P	V	P	S	T	O	U	O	X	X	R	Q	J	P	T	N	C	E	L	A	T	H	E	I		
Y	R	U	C	E	O	E	T	M	W	K	V	O	L	P	W	S	B	L	Y	Y	O	E	X	K		
U	T	K	N	D	A	I	E	O	B	X	Q	R	V	A	Q	N	Q	D	B	M	H	F	T	V		
O	E	I	S	R	M	H	B	B	T	Y	M	K	T	E	S	E	C	E	Q	H	M	J	K	W		
C	P	F	Y	B	G	N	M	S	V	W	O	M	C	H	T	I	E	S	E	P	Q	N	S			
W	R	S	E	I	P	O	F	Q	L	V	Q	X	T	L	M	T	T	N	E	C	S	K	N	B		
B	L	R	S	O	G	E	O	H	S	L	S	J	V	D	O	O	W	T	F	O	S	V	M	D		

PORTLAND

Q	U	A	L	M	S	X	I	N	M	P	V	A	S	P	C	R	N	C	Q	P	D	Y	R	F
X	Q	J	T	R	H	O	C	Q	V	H	M	E	T	F	O	T	R	S	Q	A	D	U	V	V
H	J	J	H	U	Y	I	U	I	A	N	K	E	A	K	B	R	Z	P	M	G	N	K	J	A
C	J	A	U	P	O	K	C	R	U	X	S	A	O	U	B	A	D	U	R	H	A	X	A	K
P	Z	T	S	W	G	T	C	P	K	U	O	I	B	H	I	K	C	Y	E	Q	L	A	K	Q
E	A	L	S	Y	O	A	O	I	O	H	E	F	G	I	T	F	A	R	S	P	S	D	V	I
X	I	F	M	R	I	R	X	H	R	U	B	H	N	I	R	B	Q	S	T	R	I	T	N	I
I	L	B	I	U	T	R	T	Q	F	B	F	Q	I	A	O	A	B	U	A	V	S	I	P	Z
W	C	A	O	L	E	H	U	R	S	V	L	C	H	C	P	P	Z	T	U	Y	K	H	G	Y
Q	N	U	A	A	G	S	E	L	X	P	C	D	S	C	D	L	K	H	R	N	A	G	M	B
I	I	N	E	I	Y	V	U	G	Q	Z	I	A	I	Z	L	Z	Y	F	A	Y	E	A	Z	W
A	D	B	L	A	N	K	B	M	Z	S	C	H	F	K	O	O	C	Q	N	X	P	U	O	K
T	R	J	S	J	P	J	A	B	W	M	T	P	S	J	T	O	J	Y	T	X	U	R	F	V
V	B	T	W	A	G	S	A	O	T	W	F	O	J	E	D	D	Z	E	S	F	K	T	Y	C
N	K	Q	S	Z	G	Q	R	F	R	R	H	O	U	T	S	M	B	X	M	I	E	D	T	C
E	K	U	G	D	E	F	A	Y	O	B	H	V	J	R	Y	I	M	R	N	E	R	R	B	N
D	E	J	S	A	I	P	Z	R	L	Y	K	K	T	Z	I	C	U	G	I	D	G	D	R	L
A	M	U	O	Y	F	S	S	W	L	C	M	F	V	D	L	S	H	R	R	O	H	H	K	Y
S	N	V	R	N	T	Y	T	S	E	V	B	R	L	Y	R	A	T	D	C	A	H	L	G	H
S	B	Y	K	X	K	I	T	R	Y	D	Y	F	Z	W	R	N	Z	S	U	U	M	J	U	T
N	B	E	B	I	N	B	B	O	I	N	H	Y	T	B	N	B	O	F	E	Z	R	Y	J	F
F	Y	W	V	B	Q	A	N	Q	I	C	E	F	O	F	N	W	H	H	U	T	U	Z	E	Q
V	E	Z	E	E	R	B	A	E	S	J	T	R	T	M	W	A	T	E	R	F	R	O	N	T
K	B	T	X	F	U	R	D	K	R	Y	R	S	T	U	A	C	A	A	U	C	M	R	E	S
Q	S	E	L	I	C	O	F	F	E	E	S	H	O	P	S	Q	S	H	O	P	S	B	N	A

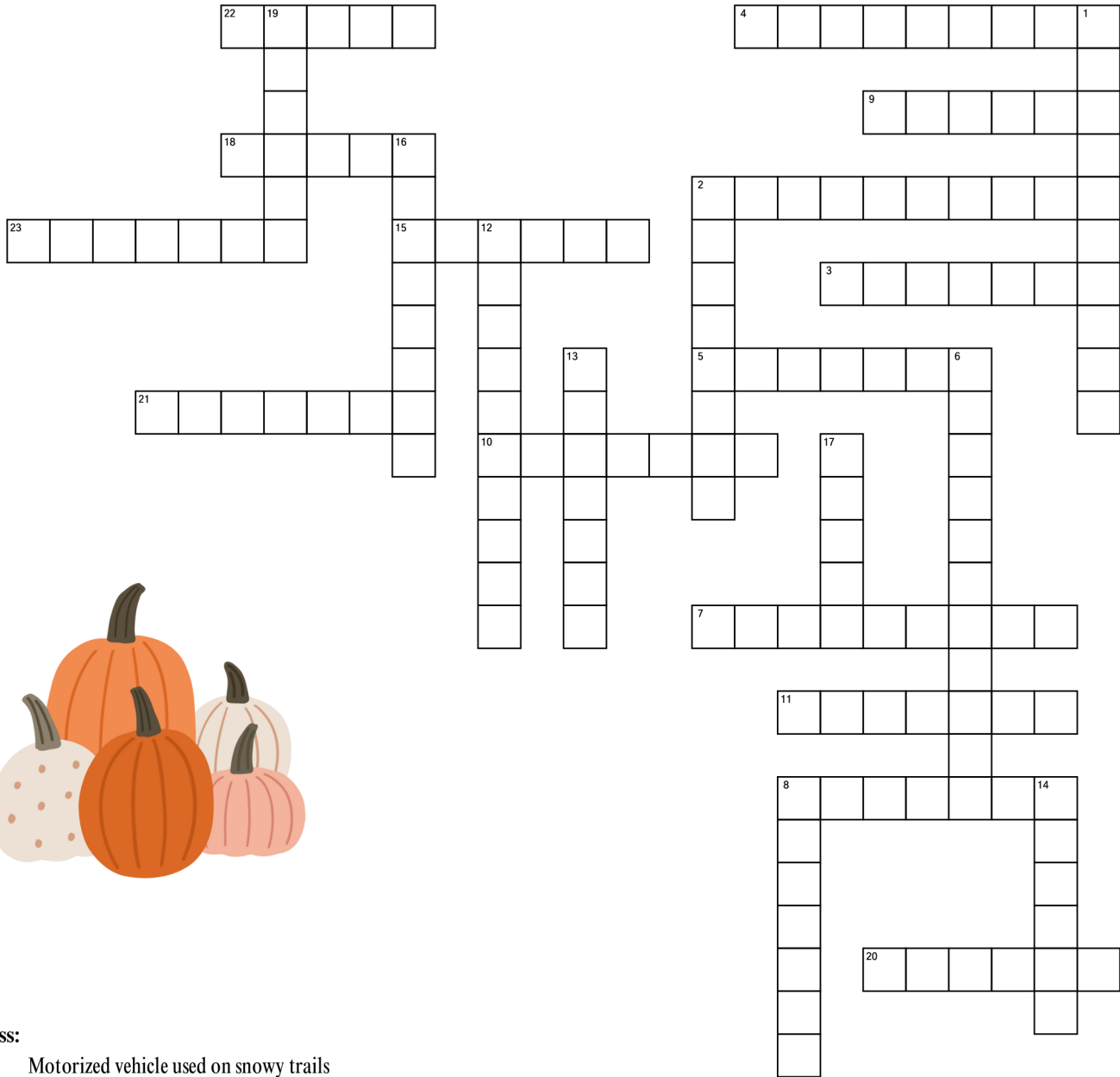
CLAM

D	O	T	U	H	G	Y	G	E	R	E	Q	W	U	G	C	C	J	S	D	B	H	P	M	A
W	V	A	O	I	C	E	S	A	J	S	I	F	A	B	K	N	O	S	E	M	W	U	L	Q
Y	N	S	P	S	R	B	K	E	C	Q	R	D	W	F	K	U	F	R	E	S	H	V	M	P
J	Q	R	T	S	Z	E	X	F	D	J	Y	X	T	E	A	C	C	A	V	J	A	G	E	H
N	S	J	T	E	W	N	H	H	C	I	I	R	F	Z	O	O	B	D	B	C	V	T	Y	Z
E	E	C	Y	J	A	P	I	N	A	F	T	P	E	T	B	Y	M	L	W	J	V	X	R	C
N	J	Y	H	R	T	M	Y	O	X	J	H	D	G	G	P	S	B	W	E	B	R	V	U	R
E	I	R	N	U	L	Y	E	O	R	A	Y	M	W	F	E	V	L	A	V	I	B	Z	Z	E
N	V	M	U	J	T	D	N	R	W	K	W	R	E	T	A	W	T	L	A	S	W	S	P	D
Q	B	H	I	G	I	L	R	I	S	W	B	F	V	B	N	C	Y	T	X	J	Y	R	V	W
U	X	B	U	N	E	N	A	D	R	B	A	U	O	Y	A	H	E	N	P	F	C	D	S	O
J	N	Y	N	T	W	H	L	U	F	B	T	G	C	W	E	T	S	A	N	D	L	F	Y	H
N	Z	E	F	R	F	G	R	X	C	U	H	B	Z	K	X	A	O	M	E	Y	X	Q	R	C
U	R	K	T	L	C	V	M	W	Z	S	Y	N	F	Q	E	O	G	O	A	E	D	V	K	B
Z	D	C	U	L	N	R	U	J	K	C	K	F	V	S	F	T	E	C	N	D	R	W	Q	Q
M	T	N	E	A	V	J	D	R	T	L	I	O	O	X	J	K	U	O	N	L	N	P	R	Z
P	W	W	L	T	H	Y	F	B	S	U	F	F	V	P	Z	P	S	M	U	Y	Z	W	J	Z
Y	I	J	R	S	N	O	L	A	Z	B	T	M	G	Y	C	K	C	R	D	N	M	W	Q	R
Y	V	H	B	A	I	D	A	Q	Q	S	A	F	U	H	T	B	N	M	E	S	P	C	D	P
U	L	S	O	P	G	T	H	H	L	D	H	M	C	E	K	M	D	L	G	N	I	V	Z	
V	J	D	H	C	X	N	B	E	C	K	I	S	Y	E	T	D	D	E	O	Y	G	Z	W	X
R	B	A	E	H	I	P	L	D	W	T	G	U	I	Y	N	R	V	L	C	V	R	I	J	E
C	D	D	L	V	D	L	R	P	N	W	Y	R	Y	K	U	O	Z	E	N	D	Y	C	D	B
K	P	I	L	I	Y	A	D	L	X	N	T	M	A	V	H	E	M	A	L	C	C	R	V	E
I	R	T	V	K	H	X	Q	Y	L	F	U	G	D	S	J	C	E	S	V	F	D	T	A	P

BLUEBERRIES

X	N	O	K	C	J	I	D	P	H	Z	A	O	N	H	L	D	O	P	L	O	Z	M	Y	R
K	E	V	C	E	G	T	P	U	O	B	N	L	J	M	R	N	T	E	J	W	P	Q	Y	L
H	Y	H	E	F	H	B	B	O	G	R	H	E	L	I	N	K	W	W	E	J	Y	W	V	P
O	I	C	C	Y	B	F	K	N	X	T	S	N	G	V	N	A	N	J	N	P	I	J	F	D
Y	W	C	A	D	U	T	A	R	T	I	X	T	E	E	W	S	G	C	Z	L	F	B	C	P
O	X	W	K	S	A	O	T	R	N	U	G	N	P	W	D	Z	U	J	D	K	V	V	O	M
H	Y	D	X	N	Z	E	M	T	L	R	K	C	T	H	M	A	F	E	C	P	V	S	A	R
Z	I	B	O	Y	N	K	T	S	M	F	H	S	E	X	B	M	A	Z	L	P	T	J	Z	J
J	Y	A	D	E	J	A	G	E	I	J	L	S	K	P	V	M	N	V	P	A	Q	V	N	N
W	I	M	U	E	S	N	Q	V	J	L	P	A	P	A	N	C	A	K	E	I	C	J	T	K
N	H	Z	L	L	I	K	X	R	C	Z	U	Q	J	U	R	G	W	K	X	Q	L	E	V	J
U	Z	L	B	K	G	U	X	A	N	Y	B	T	I	E	J	K	N	E	K	Y	K	K	I	B
Y	Y	P	C	O	D	I	L	H	N	I	L	Y	R	Q	I	D	Z	I	F	S	B	X	K	M
R	T	I	S	N	S	H	P	E	V	O	F	V	J	F	A	G	S	J	A	I	R	T	D	R
B	P	Q	E	S	P	D	B	N	M	F	P	F	G	C	K	W	C	B	B	J	E	S	R	B
G	J	L	O	K	I	Y	L	R	X	N	K	M	U	J	Q	D	E	T	X	B	K	L	P	U
U	H	E	K	O	E	A	U	M	W	Y	H	C	E	M	G	B	V	I	W	L	O	D	D	F
O	K	A	V	H	D	S	E	G	A	Y	V	N	U	L	D	S	C	K	Q	O	B	F	D	S
D	S	M	Z	N	T	T	B	G	Z	I	N	Y	X	G	V	N	I	N	V	O	J	S	U	B
D	V	K	D	H	R	E	O	I	B	N	Z	M	I	F	G	R	G	R	M	A	O	M	C	B
D	U	C	U	U	D	A	R	O	V	U	V	E	P	V	K	L	G	B	L	U	Q	Z	Z	G
D	M	Y	I	G	B	T	R	X	N	S	S	F	C	J	I	K	E	G	B	Q	U	Y	M	G
X	W	N	G	I	F	U	I	Q	V	H	A	J	V	R	B	L	M	K	L	B	T	S	E	M
G	W	T	U	B	K	D	E	X	O	R	V	I	M	T	O	G	V	A	A	Y	R	Q	T	D
T	L	Q	B	P	F	X	S	S	H	S	E	R	F	Y	C	P	D	L	M	R	B	I	L	H

Fall Season



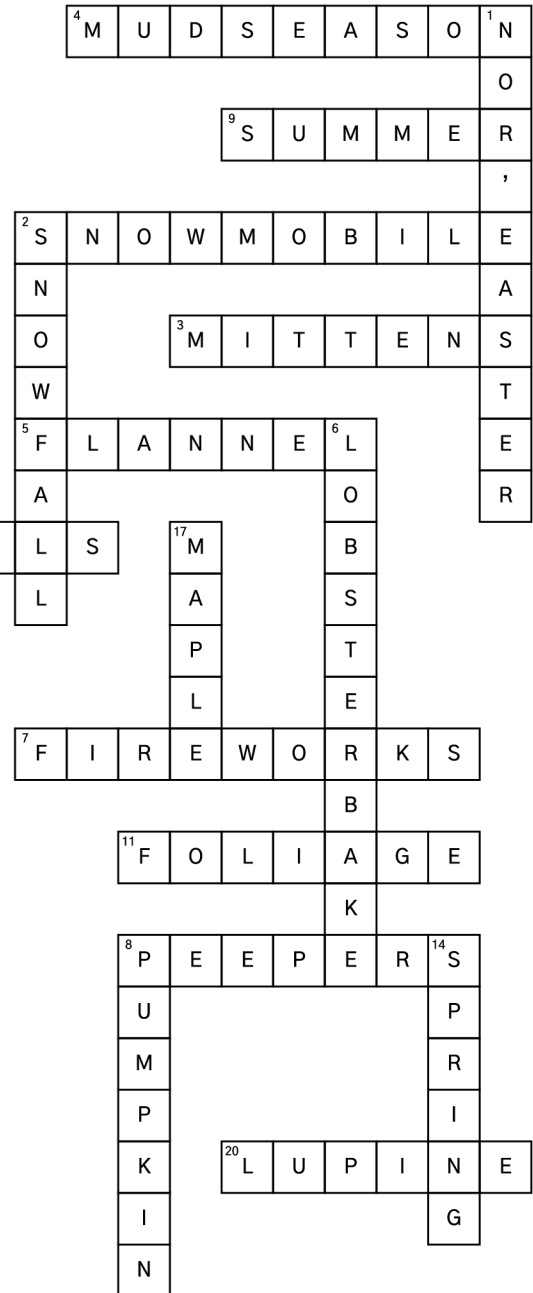
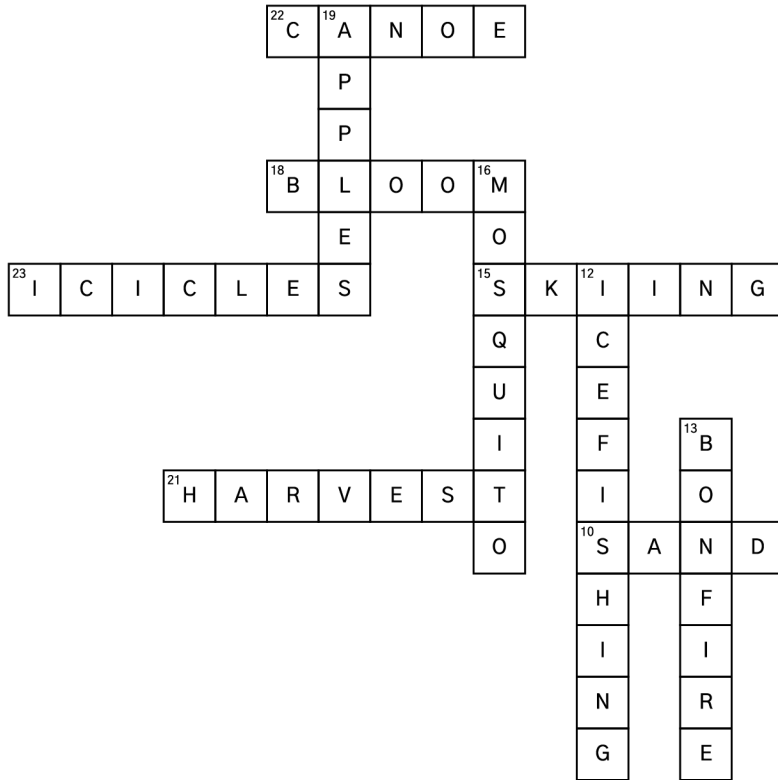
Across:

2. Motorized vehicle used on snowy trails
3. Wooly hand warmers for freezing temps
4. Messy time between winter and spring
5. Warm plaid fabric worn during chilly months
7. Explosions of color on the Fourth of July
8. Tiny frogs that chirp at spring's return
9. Warmest season, ideal for the coast
10. Open-toed footwear for warm weather
11. Brilliant fall leaves that attract leaf peepers
15. Popular winter sport in the Maine mountains
18. What flowers do after the thaw
20. Tall purple wildflower blooming in late spring
21. Seasonal gathering of crops, often in fall
22. Paddle-powered boat used on lakes and rivers
23. Frozen spikes hanging from rooftops

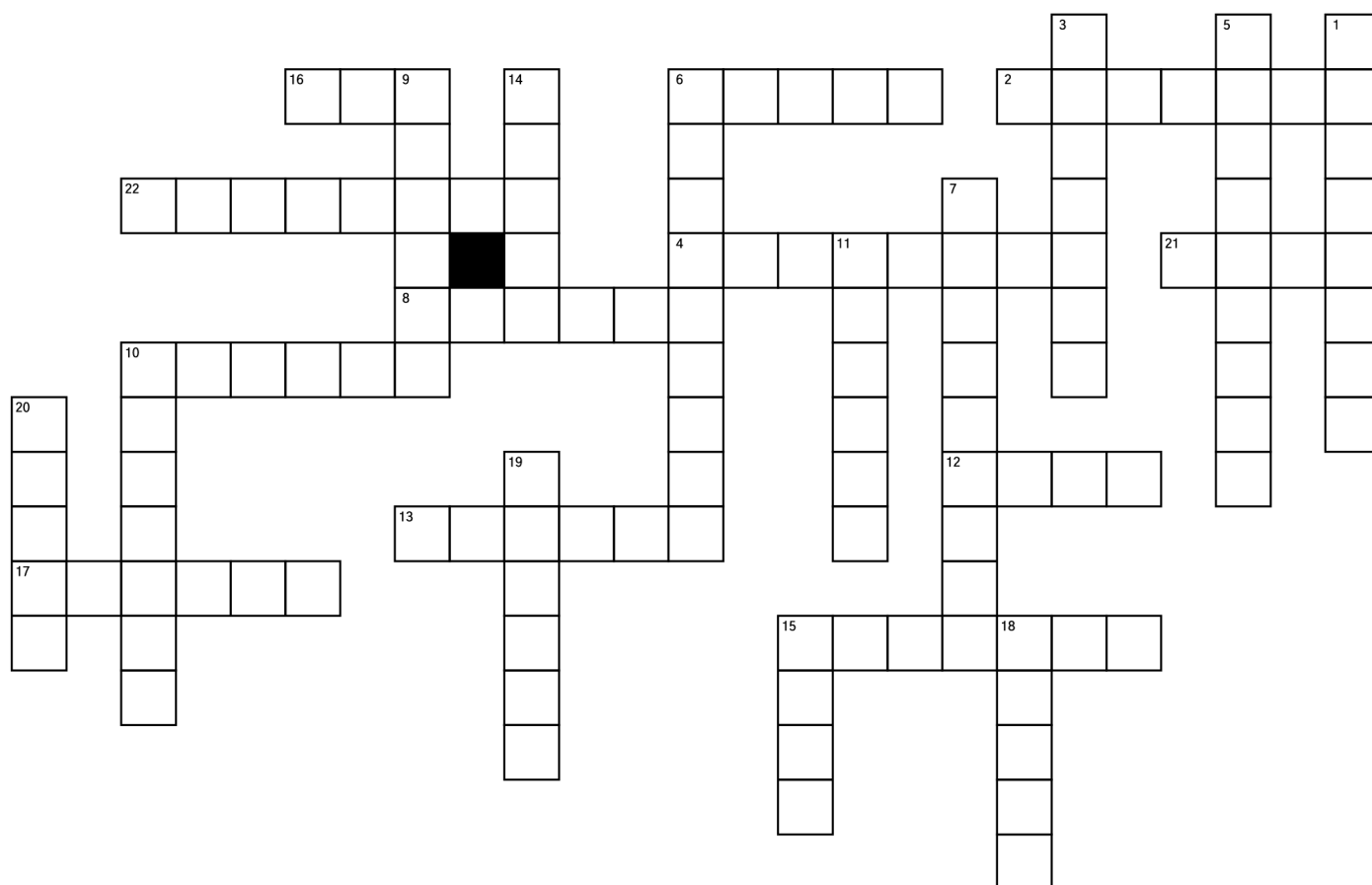
Down:

1. Powerful snowstorm common in Maine winters
2. Blankets the state in winter white
6. Classic summer feast by the ocean
8. Bright orange symbol of autumn harvest
12. Cold-weather tradition on frozen lakes
13. Outdoor fire often lit in fall or summer
14. Season of melting snow and blooming flowers
16. Buzzing summer pest found near water
17. Tree tapped for sweet syrup in spring
19. Crisp fruit picked in orchards each autumn

Fall Season



Spring Season



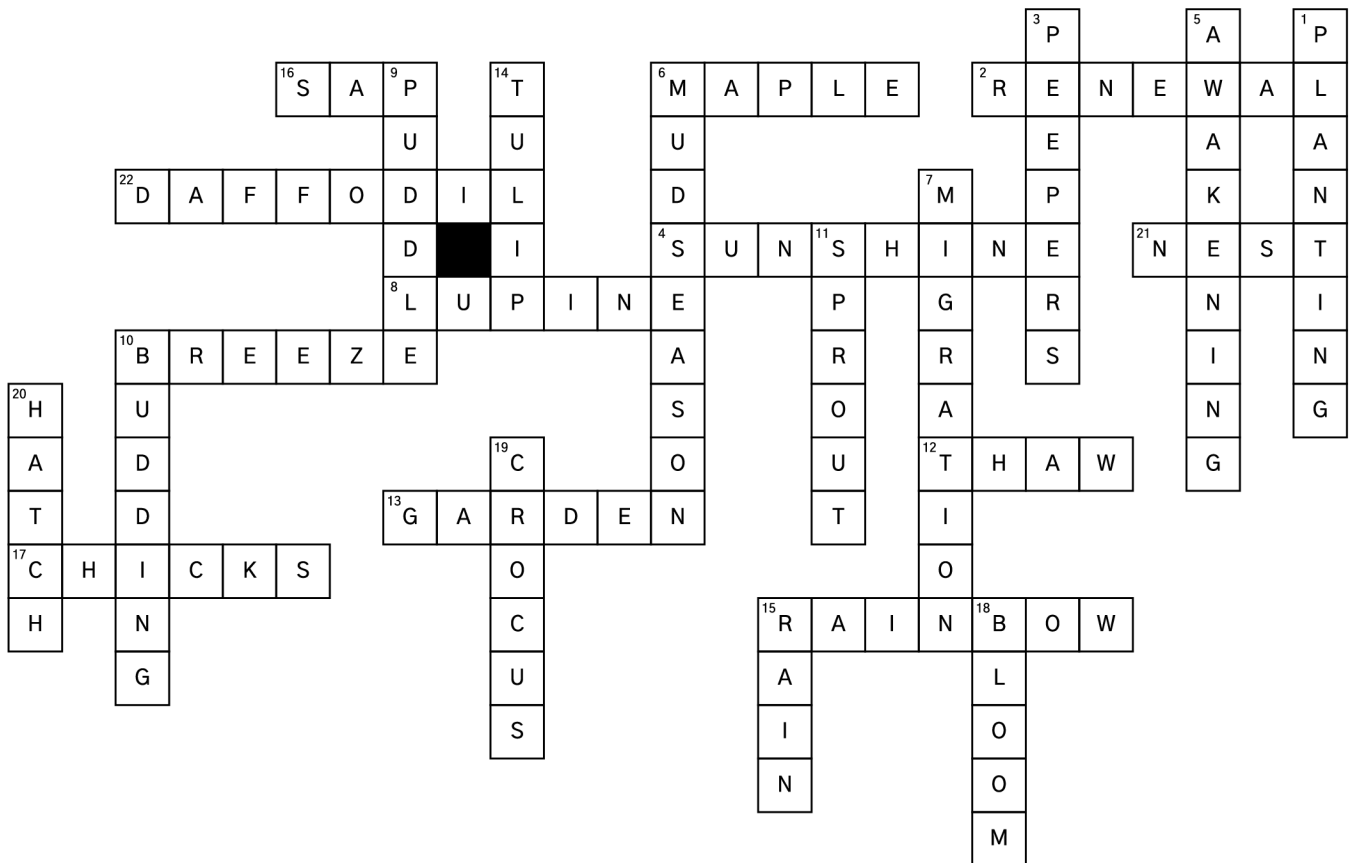
Across:

2. Word that describes the fresh start of spring
4. Warmer rays that return after winter
6. Tree tapped in early spring for sweet syrup
8. Tall purple flower blooming in late spring
10. Gentle wind that carries the scent of flowers
12. What happens when the snow and ice melt
13. Plot where vegetables and flowers are planted
15. Colorful arc in the sky after a rain
16. Sticky liquid collected from sugar maples
17. Fluffy baby birds seen on farms and in fields
21. Birds build these to hold eggs
22. Bright yellow spring bloom often seen in gardens

Down:

1. Spring activity that starts the growing season
3. Tiny frogs that chirp loudly at dusk
5. What nature does after a long winter nap
6. Maine's messy fifth season between winter and spring
7. Birds returning north after wintering in warmer places
9. Muddy water left behind after spring showers
10. Early stage of leaves and flowers on trees
11. Tiny green growth poking from the soil
14. Colorful flower that pops up in flowerbeds
15. Frequent spring weather that brings growth
18. What flowers do as the weather warms
19. One of the first flowers to poke through snow
20. What baby birds do in the spring

Spring Season





Copyright © 2025 by Savia Smith

All rights reserved. No part of this publication may be reproduced, distributed, or transmitted in any form or by any means, including photocopying, recording, or other electronic or mechanical methods, without the prior written permission of the publisher or author, except in the case of brief quotations used in reviews, articles, or scholarly works.

This book is a work of fiction. Any names, characters, places, and incidents are either products of the author's imagination or used fictitiously. Any resemblance to actual persons, living or dead, events, or locales is entirely coincidental.

For permissions or licensing inquiries, please contact:

Echoesofgrace25@gmail.com

First Edition: 2025